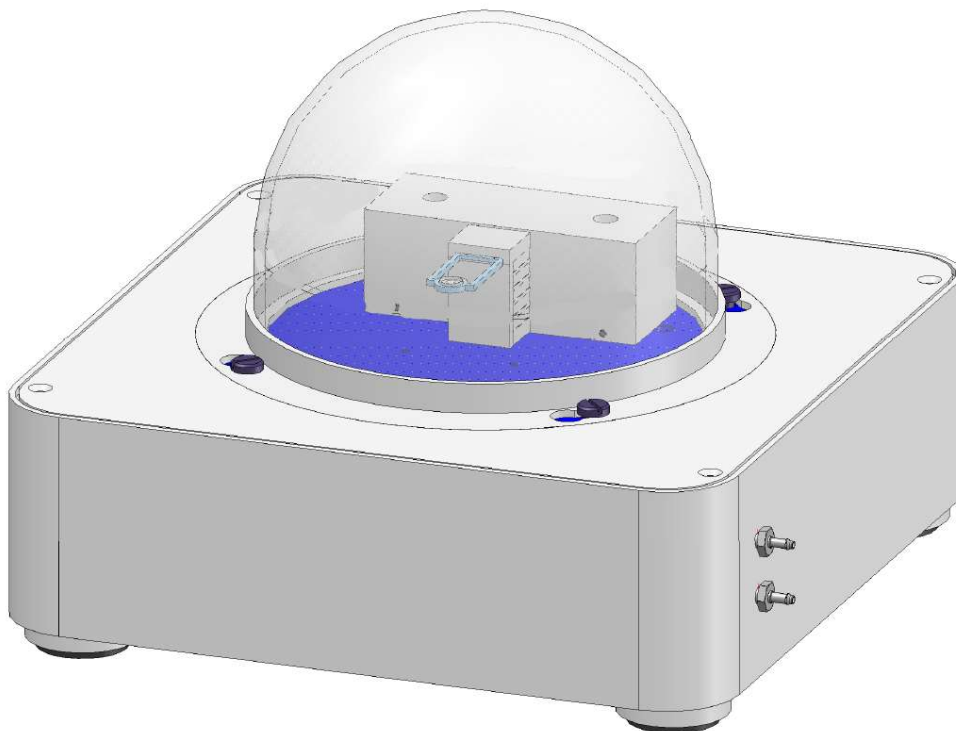


How To Handle sond type option for Chip DSC



Linseis Messgeräte GmbH

Gerlach

Stand: 09.07.2019

Index

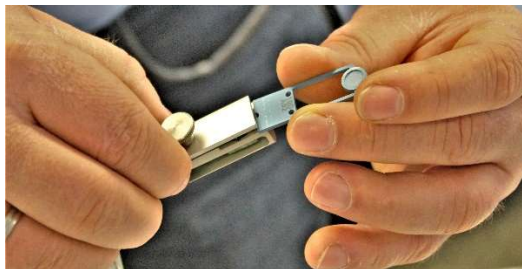
1. Assemble the sensor.....	3
2. Close the measuring cell.....	4
3. Connect the send with main device.....	5

1. Assemble the sensor

- Loose the screw on the sensor holder so there is enough space for the sensor



- Insert the sensor
- Attention: be sure the connection Pads on the sensor are on the bottom and contact the gold pins

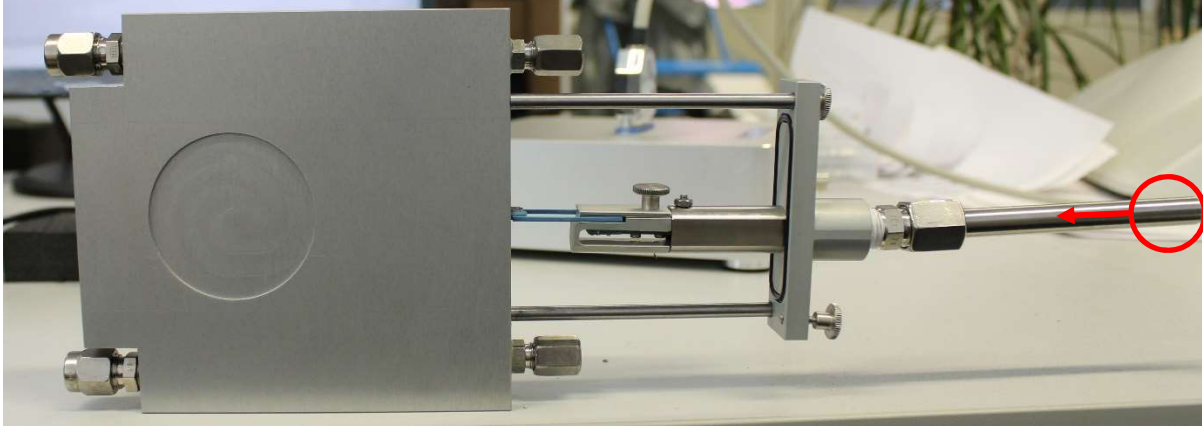


- Make sure the sensor is placed correct and tighten the screw
- Attention: Make sure the sensor cover is aligned parallel to the sensor when closed
- Attention: Make sure the sensor fits well into the locking pins

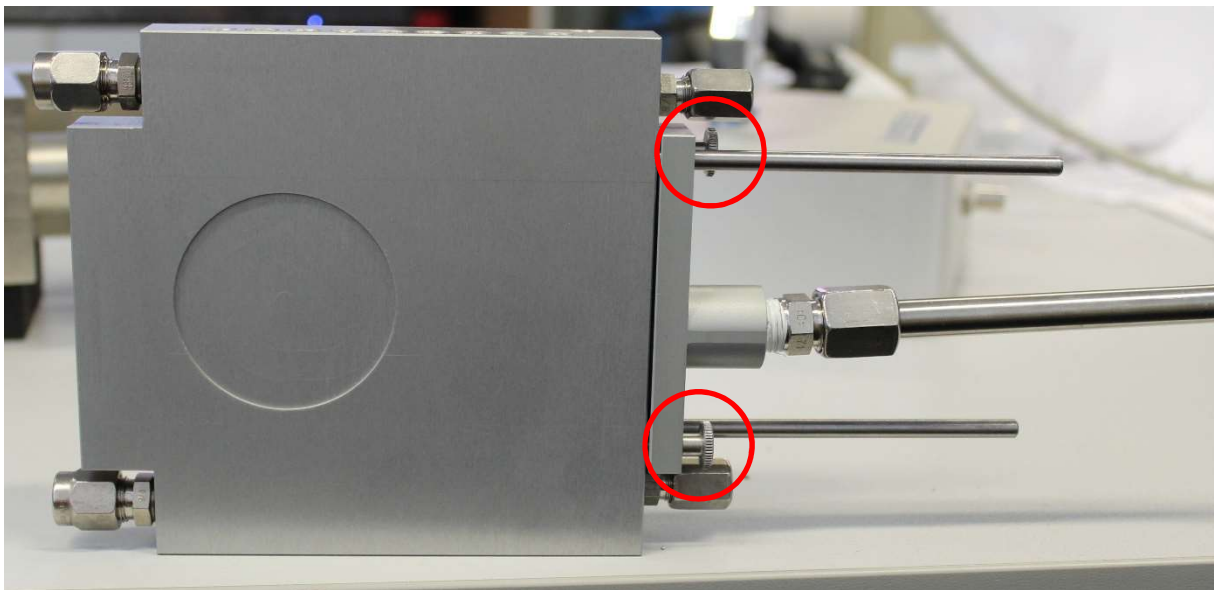


2. Close the measuring cell

- Place the sample in the mid of your well inserted sensor
- Pick the end of the steel rod and carefully close the measuring cell (avoid canting)



- Tighten the two screws



- Attention: Make sure you don't shake the sensor or measuring cell as this may cause the sample to fall off the sensor and give wrong values

3. Connect the send with main device

- Pick the sensor cable and connect it to the D-SUB connector on the top of your Chip-DSC 10



- Tighten the two screws of the D-SUB connector to make sure the cable cant be loosen accidentally while you are measuring

